

Queen of the Hill

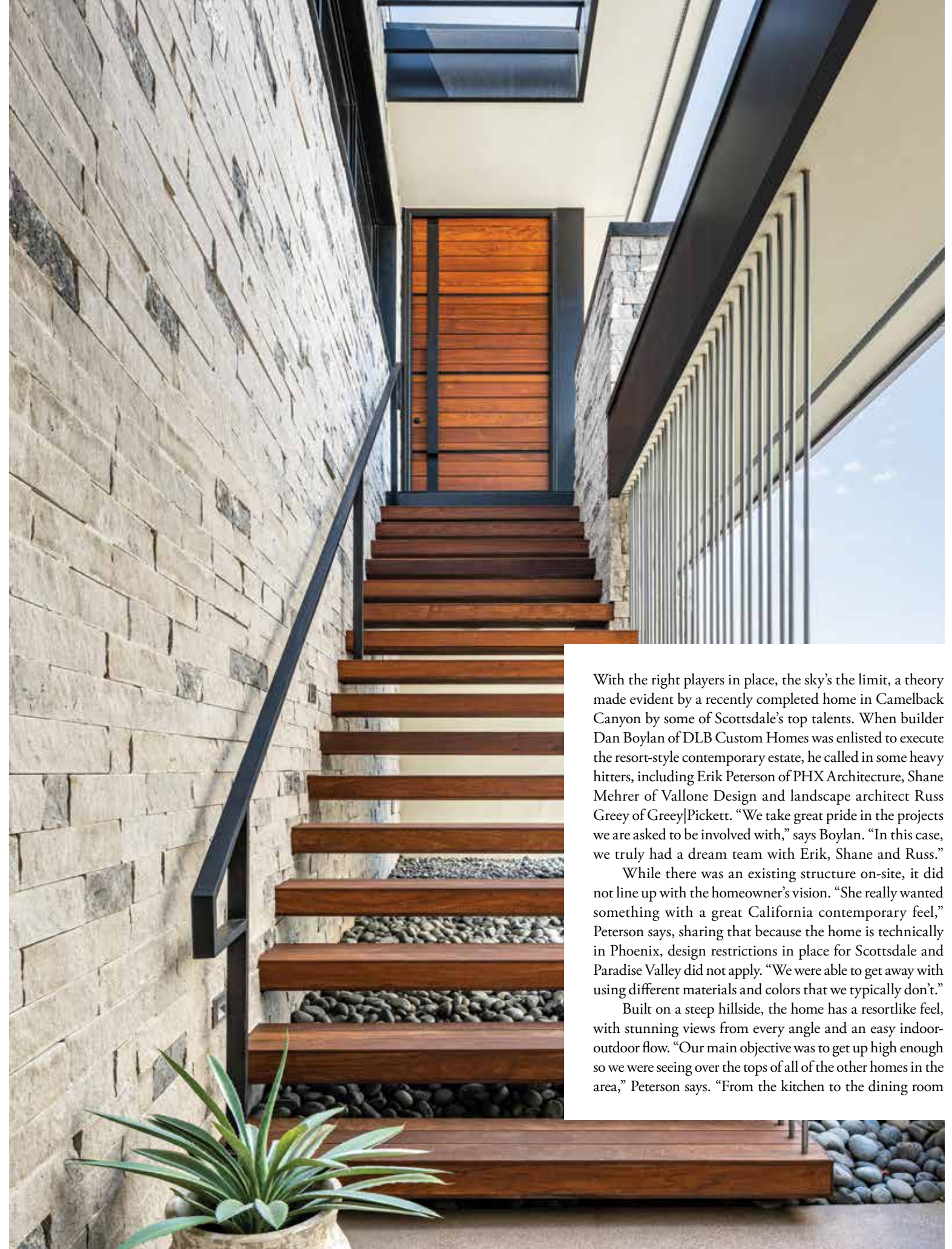
A STUNNING HILLSIDE ABODE BY PHX ARCHITECTURE, VALLONE DESIGN, GREEY/PICKETT AND DLB CUSTOM HOMES BRINGS A CALIFORNIA VIBE AND RESORTLIKE SENSIBILITY TO CAMELBACK CANYON.

*By Laura Eckstein Jones
Photographed by Phil Johnson/ProVisuals Media*

Nestled on the west side of Camelback Mountain, this new build boasts staggering views of Echo Canyon, the desert and city lights. Here, a rain curtain quietly falls from the top of the shade structure into the beach entry to the pool below.



From top: The home contains guest rooms, a theater and the garage downstairs. The living room, dining room, kitchen and primary suite are on the upper level; in the theater, a sectional from Lee Industries—upholstered in Opuzen velvet—tops a patterned cowhide rug from Surya. The walls are upholstered in a wool fabric from Brentano. The throw pillows are made with fabric from Jim Thompson. Opposite page: Architect Erik Peterson had very specific ideas for the home's three stairwells, including the one at right, which was partially inspired by Frank Lloyd Wright's Fallingwater.



With the right players in place, the sky's the limit, a theory made evident by a recently completed home in Camelback Canyon by some of Scottsdale's top talents. When builder Dan Boylan of DLB Custom Homes was enlisted to execute the resort-style contemporary estate, he called in some heavy hitters, including Erik Peterson of PHX Architecture, Shane Mehrer of Vallone Design and landscape architect Russ Greey of Greey|Pickett. "We take great pride in the projects we are asked to be involved with," says Boylan. "In this case, we truly had a dream team with Erik, Shane and Russ."

While there was an existing structure on-site, it did not line up with the homeowner's vision. "She really wanted something with a great California contemporary feel," Peterson says, sharing that because the home is technically in Phoenix, design restrictions in place for Scottsdale and Paradise Valley did not apply. "We were able to get away with using different materials and colors that we typically don't."

Built on a steep hillside, the home has a resortlike feel, with stunning views from every angle and an easy indoor-outdoor flow. "Our main objective was to get up high enough so we were seeing over the tops of all of the other homes in the area," Peterson says. "From the kitchen to the dining room



to the living room, there's glass all around that captures views of the red rock but also looks out to city views in the distance." Upstairs houses the living room, dining room, kitchen and primary suite, while downstairs are the guest rooms, theater and garage. "The primary suite is a private sanctuary sort of carved out of the mountainside with an outdoor shower and a tranquil water feature, while the public spaces have views that go on forever."

Mehrer took cues from the architecture when considering the interior design. "A lot of the materials outside were carried through inside, like the stone walls," he says. "The homeowner likes contemporary but a warm look and feel, so we had to keep things streamlined, yet comfortable." One space that brought that idea to life particularly well is the great room. Playing off the warm wood flooring and natural stone, Mehrer incorporated a custom sectional by A. Rudin covered in performance velvet upholstery from Holly Hunt into the space, alongside cowhide ottomans from Bernhardt and an area rug from David E. Adler Fine Rugs. "We wanted to make sure we warmed up the contemporary space and created balance with the sleek architecture," he adds. Mehrer worked with Boylan to create the unique lighting fixture. "We were trying to figure out what we could do to add

A custom sectional by A. Rudin covered in performance velvet upholstery from Holly Hunt and swivel lounge chairs—also by A. Rudin—upholstered in Casamance fabric and A. Rudin leather surround a custom cocktail table by Robert James. The cowhide ottomans are Bernhardt and the area rug is from David E. Adler Fine Rugs.



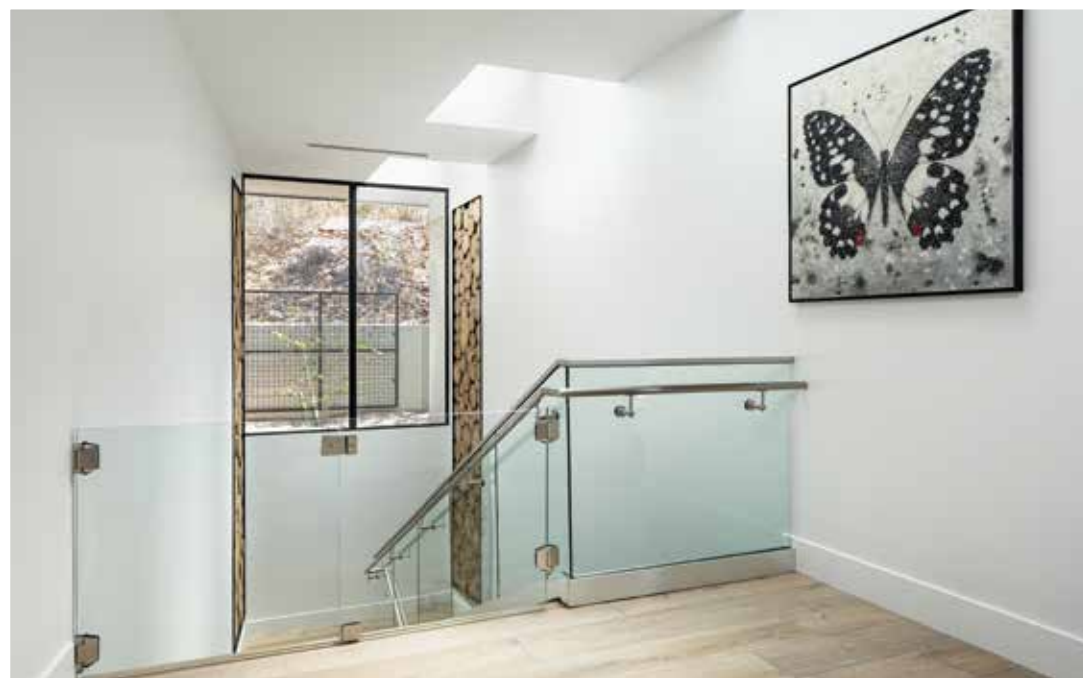
From top: The guest house exterior features a butterfly art installation by NP Fabrication; the dining room table by Parish Co is surrounded by chairs from Vanguard Furniture.



"The kitchen was meant to be very clean because it's open to the whole room," says Peterson. The counter stools are by Vanguard Furniture.



From top: The upper deck swivel chairs were purchased through Woodard; the interior stairwell contains an art piece designed by Vallone's Shane Mehrer made from a tree cut down during construction, and a butterfly piece made from crushed glass by Washington-based artist Matt Schwenk. "Dan [Boylan] had it removed and cut into slices, then we had a steel shadow box frame made to house the slices of wood," Mehrer explains. Opposite page: Greey|Pickett designed the driveway with a unique chevron pattern.



DESIGN DETAILS

- TYPE**
Single-family home
- LOCATION**
Camelback Canyon, Phoenix
- ARCHITECTURE**
Erik Peterson, PHX Architecture
phxarch.com
- INTERIOR DESIGN**
Shane Mehrer, Vallone Design
vallonedesign.com
- LANDSCAPE ARCHITECTURE**
Russell Greey, Greey|Pickett
greeypickett.com
- BUILDER**
Dan Boylan, DLB
Custom Homes Inc.
dlbhomes.com

RESOURCES

- A. RUDIN**
Great room sectional and swivel chairs
arudin.com
- BERNHARDT**
Great room ottomans
bernhardt.com
- DAVID E. ADLER FINE RUGS**
Great room area rug
davideadler.com

- LEE INDUSTRIES**
Theater sectional
leeindustries.com

- NP FABRICATION**
Exterior butterfly installation
480.684.0345

- PARISH CO**
Dining room table
danparishltd.com

- ROBERT JAMES COLLECTION**
Great room cocktail table
robertjamescollection.com

- SURYA**
Theater rug
surya.com/rugs

- VANGUARD FURNITURE**
Dining room chairs and kitchen counter stools
vanguardfurniture.com

- WOODARD**
Upper deck swivel chairs
woodard-furniture.com

some interest because there's no wall space for art and we had this big ceiling. So I thought, 'Let's do something sculptural there.' The lights really add a cool element to the room."

One area that all involved call a favorite is the interior stairwell. "One thing the homeowner wanted to keep was a massive, huge tree," says Peterson. "We tried everything we could to work around it but couldn't make the new design happen with the tree in the way." To pay homage to the tree, the team turned it into an art piece displayed in the stairwell. As well, they commissioned an artist from Washington state, Matt Schwenk, to create a custom butterfly piece from crushed glass. "That's one part of the house that I think is really special to the homeowner, because it incorporates things that are personal to her," Mehrer shares.

A huge part of what makes the home sing are the exteriors and the landscape, expertly designed by Greey, who, like Mehrer, took cues from Peterson's architectural designs. "The core of the project is

very minimalist, green with synthetic turf, and has a completely different feel [from] the rugged mountain it sits on," he says. "Part of the beauty is the contrast of the environment versus what's created. We really pulled from the language of the house. This home had a lot of warm qualities to it like the wooden ceilings, so we did some wood decking to create that resort kind of vibe."

One of Greey's favorite areas of the home—a shaded pavilion with a woven fabric top above the angular pool with a rainlike water feature—also incorporates butterflies. "This particular owner has a connection to butterflies, so we did these art panels of the butterflies that are backlit at night," he explains. "Then we took the cutouts and created a mural on the side of the guest house, with individual fiber-optic lighting behind each cutout. They all light up at night."

At the end of the day, the project—which took about two and a half years to complete—is a huge success. "It was just a very good team," says Greey. "Everyone came together and made it work." ■